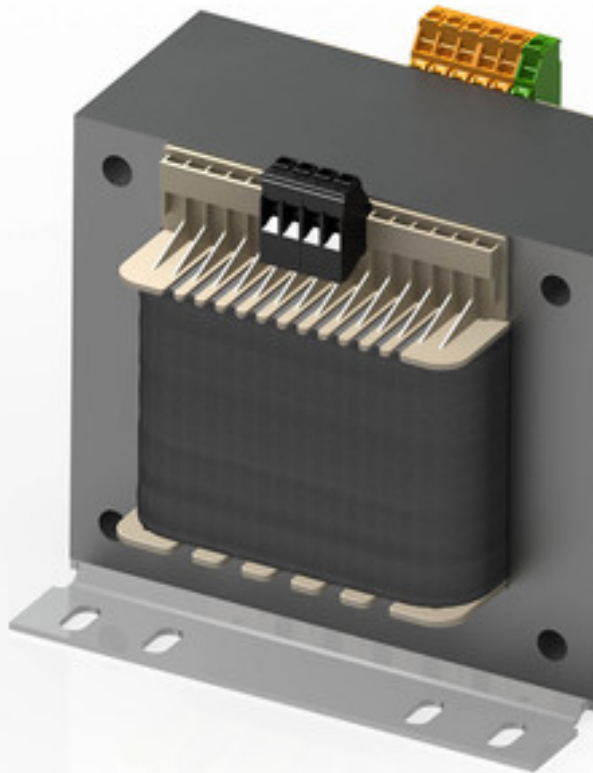


Control- and isolating transformer STSU 100/48



Picture shows STSU 1600/23

Advantages

| |
|--|
| Dual input voltage 230 and 400 Vac |
| Shielding winding between input and output |
| Very good switch-on behaviour thanks to reduced starting currents |
| High power density due to a compact construction design |
| Primary side ± 15 V tapings for voltage adjustment |
| Very good corrosion protection and low noise thanks to BLOCK IMPEX vacuum impregnation |
| Contact protected screw connection terminals complying with UVV BGV A3 |
| Simple mounting thanks to robust metal footplate with oval slots |
| 63 - 250 VA with combination footplate for bolted and rail mounting |

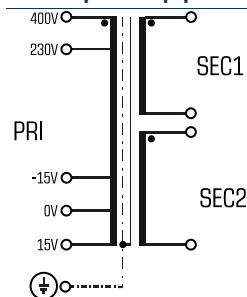
Applications

As a control transformer for the electrical isolation of the input and output sides. The construction of the transformer is designed to supply control systems according to EN 60204.

As an isolating transformer for the safe electrical isolation of the input and output sides. The transformer may be used to set up protective separation as a protective measure in accordance with VDE 0100.

As a safety transformer for the safe electrical isolation of the input and output sides. The transformer is suitable for creating SELV and PELV circuits because of the limit on the output voltage.

Sample application



Standards

Control transformer
to: VDE 0570 Teil 2-2, DIN EN 61558-2-2, EN 61558-2-2, IEC 61558-2-2,
UL 5085-1/-2, CSA 22.2 No.66
Isolating transformer
to: VDE 0570 Teil 2-4, DIN EN 61558-2-4, EN 61558-2-4, IEC 61558-2-4,
UL 1561, CSA 22.2 No.66

Approvals



UL 5085-1/-2, CSA 22.2 No.66



Control- and isolating transformer

STSU 100/48

| Type | | STSU 100/48 |
|--------------------------|----------------------------------|------------------------------------|
| Electrical data | Input | |
| | Rated frequency | 50 - 60 Hz |
| | Rated input voltage | 230/400 Vac |
| | Tappings Input | ±15 V |
| | Output | |
| | Efficiency | 84.5 % |
| | No-load voltage (app. x factor) | 1.10 |
| | Rated output voltage | 2 x 24 Vac |
| | Rated power VDE (DB cos phi=1) | 100 VA |
| | Rated power VDE (KB cos phi=0.5) | 310 VA |
| | Standards | |
| | Classification | Control- and isolating transformer |
| | Approvals | |
| | Approvals | cURus |
| | Environment | |
| Ambient temperature max. | 40 °C | |
| Type of cooling | self-cooling | |
| Safety and protection | | |
| Insulation class | VDE=B, UL=class 130 | |
| Protection index | IP 00 | |
| Safety class (prepared) | I | |
| Type | Open type | |
| Short circuit strength | non-short-circuit proof | |
| Order numbers | | |
| Order Number | STSU 100/48 | |

| Type | | STSU 100/48 |
|-----------------|-----------------------|---|
| Mechanical data | Terminal and mounting | |
| | Fixing method | Dual purpose foot plate also for installation on mounting rails |
| | Fixing screws | M4 |
| | Terminals Input | Screw clamp, 4 mm ² |
| | Terminals Output | Screw clamp, 4 mm ² |
| | Terminals PE | Screw-type terminal, 4 mm ² |
| | Measures and weights | |
| | Weight | 2.10 kg |

