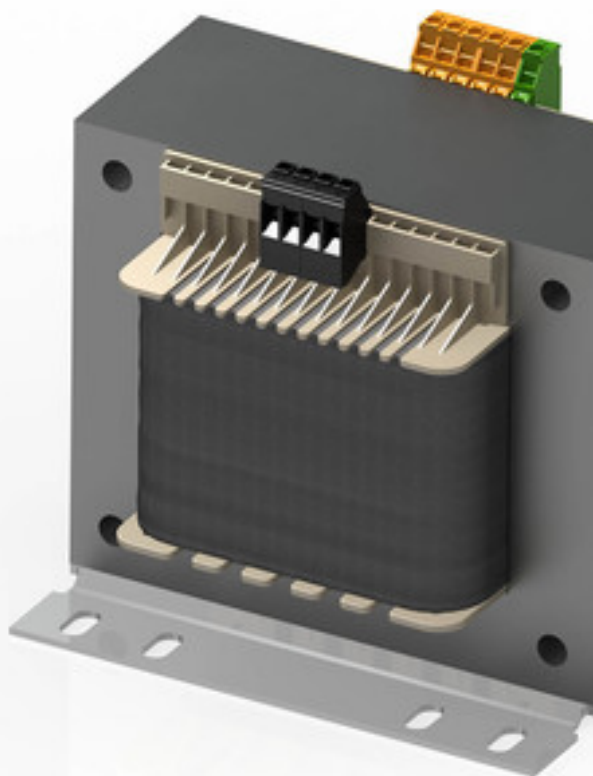


Control- and isolating transformer STSU 100/23



Picture shows STSU 1600/23

Advantages

Dual input voltage 230 and 400 Vac
Shielding winding between input and output
Very good switch-on behaviour thanks to reduced starting currents
High power density due to a compact construction design
Primary side ± 15 V tapings for voltage adjustment
Very good corrosion protection and low noise thanks to BLOCK IMPEX vacuum impregnation
Contact protected screw connection terminals complying with UVV BGV A3
Simple mounting thanks to robust metal footplate with oval slots
63 - 250 VA with combination footplate for bolted and rail mounting

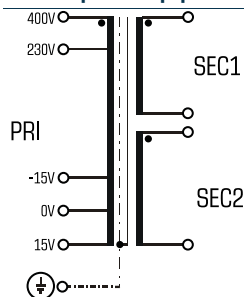
Applications

As a control transformer for the electrical isolation of the input and output sides. The construction of the transformer is designed to supply control systems according to EN 60204.

As an isolating transformer for the safe electrical isolation of the input and output sides. The transformer may be used to set up protective separation as a protective measure in accordance with VDE 0100.

As a safety transformer for the safe electrical isolation of the input and output sides. The transformer is suitable for creating SELV and PELV circuits because of the limit on the output voltage.

Sample application



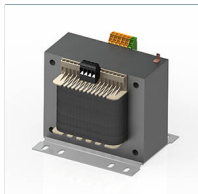
Standards

Control transformer
to: VDE 0570 Teil 2-2, DIN EN 61558-2-2, EN 61558-2-2, IEC 61558-2-2,
UL 5085-1/-2, CSA 22.2 No.66
Isolating transformer
to: VDE 0570 Teil 2-4, DIN EN 61558-2-4, EN 61558-2-4, IEC 61558-2-4,
UL 1561, CSA 22.2 No.66

Approvals



UL 5085-1/-2, CSA 22.2 No.66



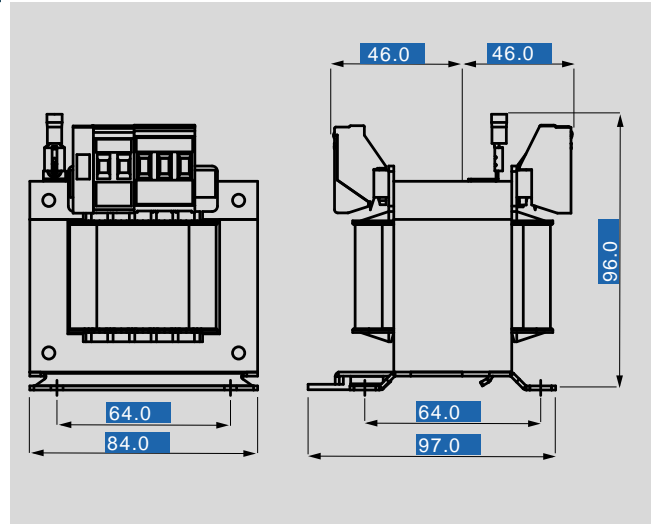
Control- and isolating transformer STSU 100/23

Electrical data

Type	STSU 100/23
Input	
Rated frequency	50 - 60 Hz
Rated input voltage	230/400 Vac
Tappings Input	±15 V
Output	
Efficiency	85.0 %
No-load voltage (app. x factor)	1.09
Rated output voltage	2 x 115 Vac
Rated power VDE (DB cos phi=1)	100 VA
Rated power VDE (KB cos phi=0.5)	310 VA
Standards	
Classification	Control- and isolating transformer
Approvals	
Approvals	cURus
Environment	
Ambient temperature max.	40 °C
Type of cooling	self-cooling
Safety and protection	
Insulation class	VDE=B, UL=class 130
Protection index	IP 00
Safety class (prepared)	I
Type	Open type
Short circuit strength	non-short-circuit proof
Order numbers	
Order Number	STSU 100/23

Mechanical data

Type	STSU 100/23
Terminal and mounting	
Fixing method	Dual purpose foot plate also for installation on mounting rails
Fixing screws	M4
Terminals Input	Screw clamp, 4 mm ²
Terminals Output	Screw clamp, 4 mm ²
Terminals PE	Screw-type terminal, 4 mm ²
Measures and weights	
Weight	2.10 kg



Subject to change.