

Safety isolating transformer

PT 4,5/2/6



Picture shows PT 7,5/1/15

Advantages

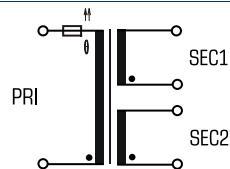
Minimum size at high output
Integrated overload protection using PTC in the input
Also with dual output voltage for series or parallel connection
Permanent corrosion protection, high insulation value and maximum electrical reliability thanks to XtraDenseFill resin encapsulation
Self-extinguishing potting material
Space saving installation thanks to additional screw mounting in the base plate

Applications

As a mains transformer for adjustment of the voltage and simple electrical isolation.

Safety transformer for the safe electrical isolation of the input and output sides. The transformer is suitable for creating SELV and PELV circuits because of the limit on the output voltage.

Sample application



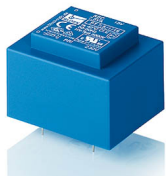
Standards

Safety isolating transformer
to: VDE 0570 Part 2-6, DIN EN 61558-2-6, EN 61558-2-6, IEC 61558-2-6

Approvals



VDE, UL 5085-1/-2, CSA 22.2 No.66



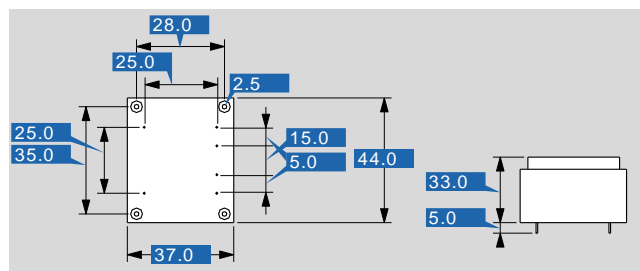
Safety isolating transformer PT 4,5/2/6

Electrical data

Type	PT 4,5/2/6
Input	
Rated input voltage	230 Vac
Rated frequency	50 - 60 Hz
Output	
Rated output voltage	2 x 6 Vac
Rated Power	4.5 VA
No-load voltage (app. x factor)	1.32
No-load loss (typ.)	1.50 W
Efficiency	65.0 %
Standards	
Classification	Safety isolating transformer
Approvals	
Approvals	cURus, VDE
Environment	
Ambient temperature max.	40 °C
Safety and protection	
Type	Encapsulated
Insulation class	VDE=E, UL=class 105
Protection index	IP 00
Safety class (prepared)	II
Short circuit strength	non-inherently short-circuit proof
Order numbers	
Order Number	PT 4,5/2/6

Mechanical data

Type	PT 4,5/2/6
Terminal and mounting	
Terminals	Pins for PCB
Measures and weights	
Pin (ø)	0.8 mm
Core type	EI 42/14,8
Weight	0.19 kg



Subject to change.