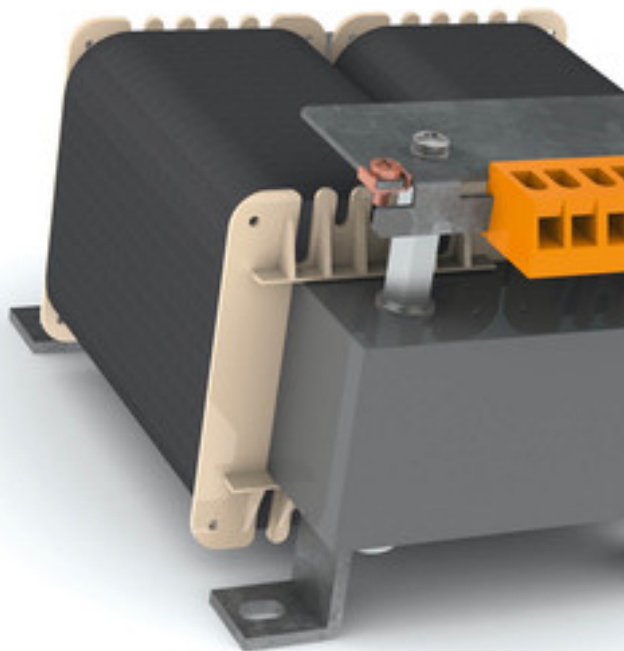


Control transformer **BUST 3000/5/23**



Picture shows BUST 1600/4/23

Advantages

High power density due to a compact construction design

Primary side $\pm 5\%$ tapings for voltage adjustment

Very good corrosion protection and low noise thanks to BLOCK IMPEX vacuum impregnation

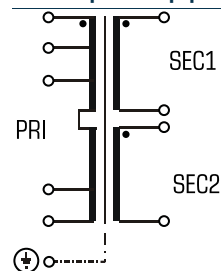
Contact protected screw connection terminals complying with UVV BGV A3

Low height

Applications

Control transformer for the electrical isolation of the input and output sides. The design of the transformer makes it suitable for the supply of control systems complying with EN 60204.

Sample application



Standards

Control transformer
to: VDE 0570 Teil 2-2, DIN EN 61558-2-2, EN 61558-2-2, IEC 61558-2-2,
UL 5085-1/-2, CSA 22.2 No.66

Approvals



UL 5085-1/-2, CSA 22.2 No.66



Control transformer

BUST 3000/5/23



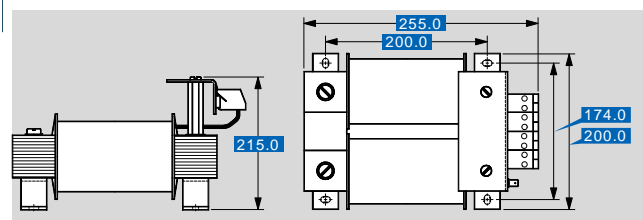
Electrical data

Type	BUST 3000/5/23
Input	
Rated input voltage	500 Vac
Tappings Input	±5 %
Low-inrush current	typ. rated current up to 12 times
Rated frequency	50 - 60 Hz
Output	
Rated output voltage	2 x 115 Vac
Rated power VDE (DB cos phi=1)	3,000 VA
Rated power VDE (KB cos phi=0.5)	8,900 VA
Efficiency	95.3 %
Approvals	
Approvals	cURus
Environment	
Ambient temperature max.	40 °C
Type of cooling	self-cooling
Safety and protection	
Insulation class	VDE=B, UL=class 130
Protection index	IP 00
Safety class (prepared)	I
Type	Open type
Short circuit strength	non-short-circuit proof
PRI Fusing recommendation by circuit breaker with tripping characteristic type 20 x I _{rated} related to set)	
Setting range	6.30 - 10.00 A
Setting value	6.30 A
Order numbers	
Order Number	BUST 3000/5/23



Mechanical data

Type	BUST 3000/5/23
Terminal and mounting	
Fixing method	Fixing rail
Fixing screws	M6
Terminals Input	Screw clamp, 2.5 mm ²
Terminals Output	Screw clamp, 4 mm ²
Terminals PE	Screw-type terminal, 4 mm ²
Measures and weights	
Weight	28.00 kg



Subject to change.