

Metal enclosures **BG 300**

Advantages

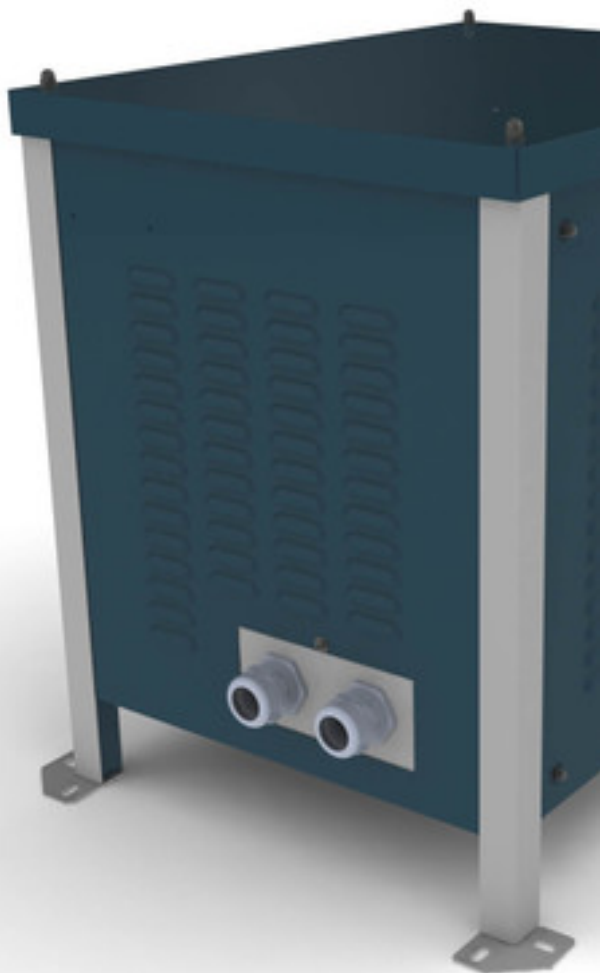
Excellent corrosion protection and high abrasion resistance through powder-coated surface RAL 5008/9006

With cooling fins for optimal heat extraction

Optionally available in degree of protection IP 54

Applications

Universal metal enclosure for degree of protection IP23



Picture shows BG 240

Approvals



Metal enclosures BG 300

| Type | | BG 300 |
|-----------------|---|-----------|
| Electrical data | Operating data | |
| | Enclosure suitable for protection index | IP 23 |
| | Max. Power loss (at 40 °C ambient temperature) | 1700 W |
| | For power (single-phase)* | 53,000 VA |
| | For power (three-phase)* | 80,000 VA |
| Notes | The indicated power is a guideline. Deviations may occur depending on the version of the transformer. | |
| * | | |
| Order numbers | | |
| Order Number | | BG 300 |

| Type | | BG 300 |
|-----------------|--------------------------------|---------------------|
| Mechanical data | Terminal and mounting | |
| | Cable glanding type | 2 Universal entries |
| | Cable glanding Ø | 30 - 66 mm |
| | Measures and weights | |
| | Effective inside dimension (W) | 735 mm |
| | Effective inside dimension (H) | 850 mm |
| | Effective inside dimension (D) | 650 mm |
| | Fixing hole Ø | 11 x 22 mm |
| | Weight | 110 kg |

