

# 隔离变压器 CT

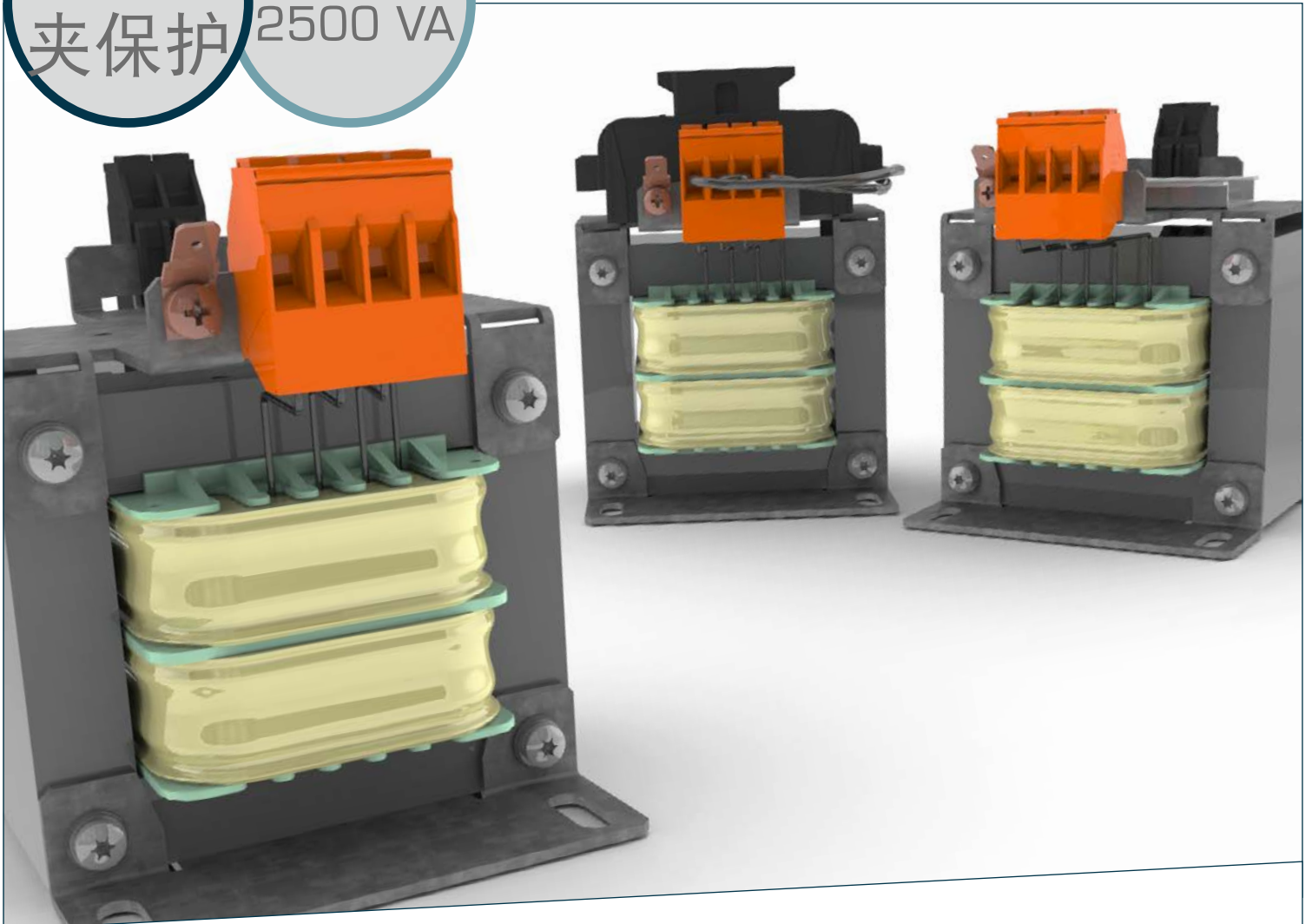
## SEPARATING TRANSFORMERS CT

版本 / 技术数据

Versions / Technical data

全效防  
夹保护

功率高达  
2500 VA

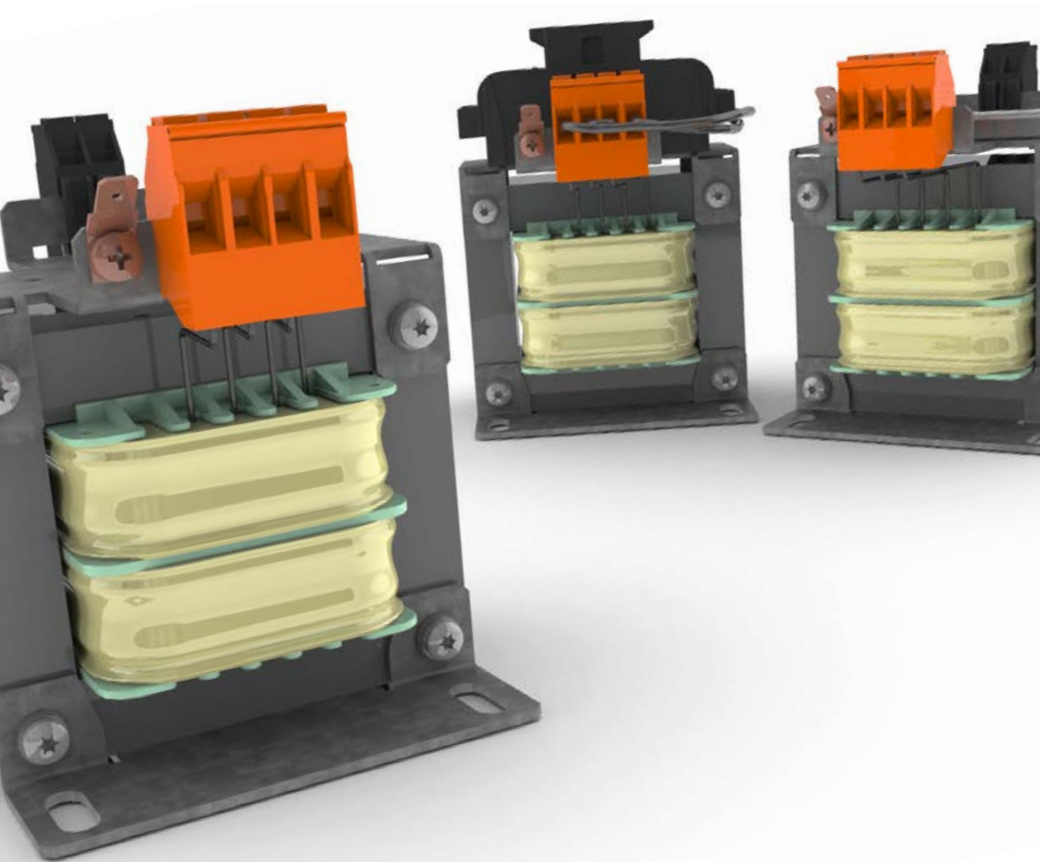


# 隔离变压器

## SEPARATING TRANSFORMERS

BLOCK新推出的CT系列工业隔离变压器非常适合通用负载应用和工业负载应用，并提供经济和高效的解决方案。加上稳定的设计，可确保控制电路的持续供电。提供带DIN导轨（用于添加其他组件）的版本或熔断版本（适合美国市场）。

BLOCK's new CT series of industrial separating transformers is the perfect choice for general purpose and industrial load applications and provides an economical and efficient solution. It ensures a continuous supply of your control circuits combined with a robust design. Versions with DIN rail for additional components or fused versions, specific to the US market, are available.



绝缘材料级  
INSULATION  
CLASS  
**B (130 °C)**

输入额定电压  
INPUT VOLTAGE  
**2 x 240 VAC  
或 600 VAC**

功率  
POWER  
**50 - 2500 VA**

环境温度  
AMBIENT  
TEMPERATURE  
**40 °C**

许可  
APPROVALS  
**UL 5085-1/-2  
CSA 22.2**

频率  
FREQUENCY  
**50 - 60 HZ**

## HIGHLIGHTS

可提供配有熔丝的版本  
US-FUSED VERSIONS  
AVAILABLE

可选择带有DIN导轨的额外  
组件版本  
VERSIONS WITH DIN RAIL FOR  
ADDITIONAL COMPONENTS  
AVAILABLE

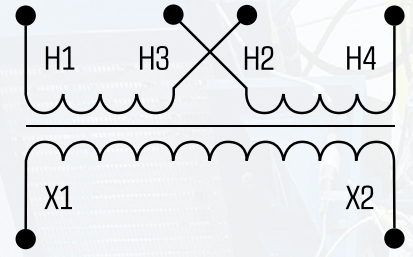
全效防夹保护  
100 % FINGER-SAFE

包含跳线，用于初级电压  
选择（A组和B组）  
JUMPERS INCLUDED FOR  
PRIMARY VOLTAGE SELECTION  
(GROUP A AND B)

功率高达2500 VA  
POWER UP TO 2500 VA

# 技术数据

## TECHNICAL DATA



### A组

#### GROUP A

输入额定电压: **2 x 240 Vac**  
Input voltage: **2 x 240 Vac**

输出电压: **24 Vac**  
Output voltage: **24 Vac**

测量功率 (VA) Rated power (VA)	订货号 Order number	尺寸图片 Dimension picture	输出电流 (A) Output current (A)	总体尺寸(mm) Overall dimensions (mm)			熔断版本尺寸 (mm) Dimensions for fused versions (mm)		重量 (kg) Weight (kg)
				A	B	C	A	C	
50	CT-005-048-24-x	1	2,08	66	80	93	76	95	1
75	CT-007-048-24-x	1	3,12	78	79	103	78	105	1,1
100	CT-010-048-24-x	1	4,17	78	82	103	78	105	1,5
150	CT-015-048-24-x	2	6,25	96	100	118	96	120	2,2
200	CT-020-048-24-x	2	8,33	96	108	118	96	120	2,8
250	CT-025-048-24-x	2	10,4	96	122	118	96	120	3,5
300	CT-030-048-24-x	2	12,5	120	104	138	120	140	4
350	CT-035-048-24-x	2	14,6	120	122	138	120	140	5

### B组

#### GROUP B

输入额定电压: **2 x 240 Vac**  
Input voltage: **2 x 240 Vac**

输出电压: **120 Vac**  
Output voltage: **120 Vac**

测量功率 (VA) Rated power (VA)	订货号 Order number	尺寸图片 Dimension picture	输出电流 (A) Output current (A)	总体尺寸(mm) Overall dimensions (mm)			熔断版本尺寸 (mm) Dimensions for fused versions (mm)		重量 (kg) Weight (kg)
				A	B	C	A	C	
50	CT-005-048-12-x	1	0,42	66	80	93	76	95	1
75	CT-007-048-12-x	1	0,63	78	79	103	78	105	1,1
100	CT-010-048-12-x	1	0,83	78	82	103	78	105	1,5
150	CT-015-048-12-x	2	1,25	96	100	118	96	120	2,2
200	CT-020-048-12-x	2	1,67	96	108	118	96	120	2,8
250	CT-025-048-12-x	2	2,08	96	122	118	96	120	3,5
300	CT-030-048-12-x	2	2,50	120	104	138	120	140	4
350	CT-035-048-12-x	2	2,92	120	122	138	120	140	5
500	CT-050-048-12-x	2	4,17	120	145	138	120	140	6,8
750	CT-075-048-12-x	2	6,25	150	140	163	150	165	9,8
1000	CT-100-048-12-x	2	8,33	174	145	183	174	186	11,2
1500	CT-150-048-12-x	3	12,5	192	165	198	192	201	16,7
2000	CT-200-048-12-x	3	16,7	192	180	202	192	202	21
2500	CT-250-048-12-x	3	20,8	192	190	202	192	202	25,8

x= 0: 标准版本

- 1: 包含3极美式熔丝盒
- 2: 包含DIN导轨 (用于添加其他组件)

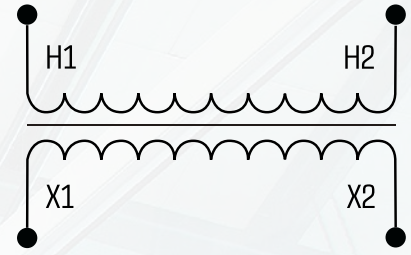
x= 0: Standard version

- 1: 3-pole US-fuseblock included
- 2: DIN rail for additional components included

## C组 GROUP C

输入额定电压: **600 Vac**  
Input voltage: **600 Vac**

输出电压: **24 Vac**  
Output voltage: **24 Vac**



测量功率 (VA) Rated power (VA)	订货号 Order number	尺寸图片 Dimension picture	输出电流 (A) Output current (A)	总体尺寸(mm) Overall dimensions (mm)			熔断版本尺寸 (mm) Dimensions for fused versions (mm)		重量 (kg) Weight (kg)
				A	B	C	A	C	
50	CT-005-060-24-x	1	2,08	66	80	93	76	95	1
75	CT-007-060-24-x	1	3,12	78	79	103	78	105	1,1
100	CT-010-060-24-x	1	4,17	78	82	103	78	105	1,5
150	CT-015-060-24-x	2	6,25	96	100	118	96	120	2,2
200	CT-020-060-24-x	2	8,33	96	108	118	96	120	2,8
250	CT-025-060-24-x	2	10,4	96	122	118	96	120	3,5
300	CT-030-060-24-x	2	12,5	120	104	138	120	140	4
350	CT-035-060-24-x	2	14,6	120	122	138	120	140	5

## D组 GROUP D

输入额定电压: **600 Vac**  
Input voltage: **600 Vac**

输出电压: **120 Vac**  
Output voltage: **120 Vac**

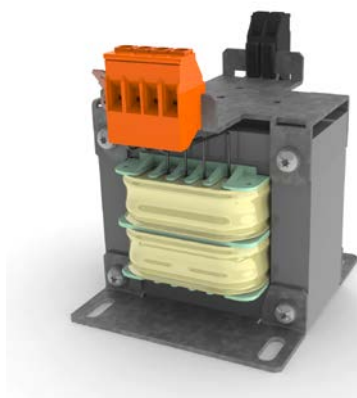
测量功率 (VA) Rated power (VA)	订货号 Order number	尺寸图片 Dimension picture	输出电流 (A) Output current (A)	总体尺寸(mm) Overall dimensions (mm)			熔断版本尺寸 (mm) Dimensions for fused versions (mm)		重量 (kg) Weight (kg)
				A	B	C	A	C	
50	CT-005-060-12-x	1	0,42	66	80	93	76	95	1
75	CT-007-060-12-x	1	0,63	78	79	103	78	105	1,1
100	CT-010-060-12-x	1	0,83	78	82	103	78	105	1,5
150	CT-015-060-12-x	2	1,25	96	100	118	96	120	2,2
200	CT-020-060-12-x	2	1,67	96	108	118	96	120	2,8
250	CT-025-060-12-x	2	2,08	96	122	118	96	120	3,5
300	CT-030-060-12-x	2	2,50	120	104	138	120	140	4
350	CT-035-060-12-x	2	2,92	120	122	138	120	140	5
500	CT-050-060-12-x	2	4,17	120	145	138	120	140	6,8
750	CT-075-060-12-x	2	6,25	150	140	163	150	165	9,8
1000	CT-100-060-12-x	2	8,33	174	145	183	174	186	11,2
1500	CT-150-060-12-x	3	12,5	192	165	198	192	201	16,7
2000	CT-200-060-12-x	3	16,7	192	180	202	192	202	21
2500	CT-250-060-12-x	3	20,8	192	190	202	192	202	25,8

x= 0: 标准版本

- 1: 包含3极美式熔丝盒
- 2: 包含DIN导轨 (用于添加其他组件)

x= 0: Standard version

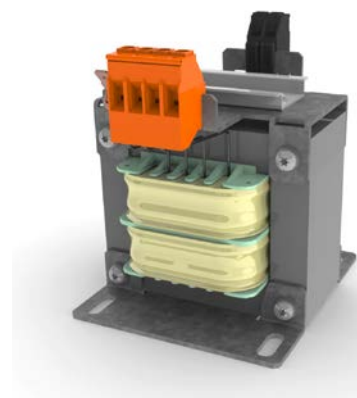
- 1: 3-pole US-fuseblock included
- 2: DIN rail for additional components included



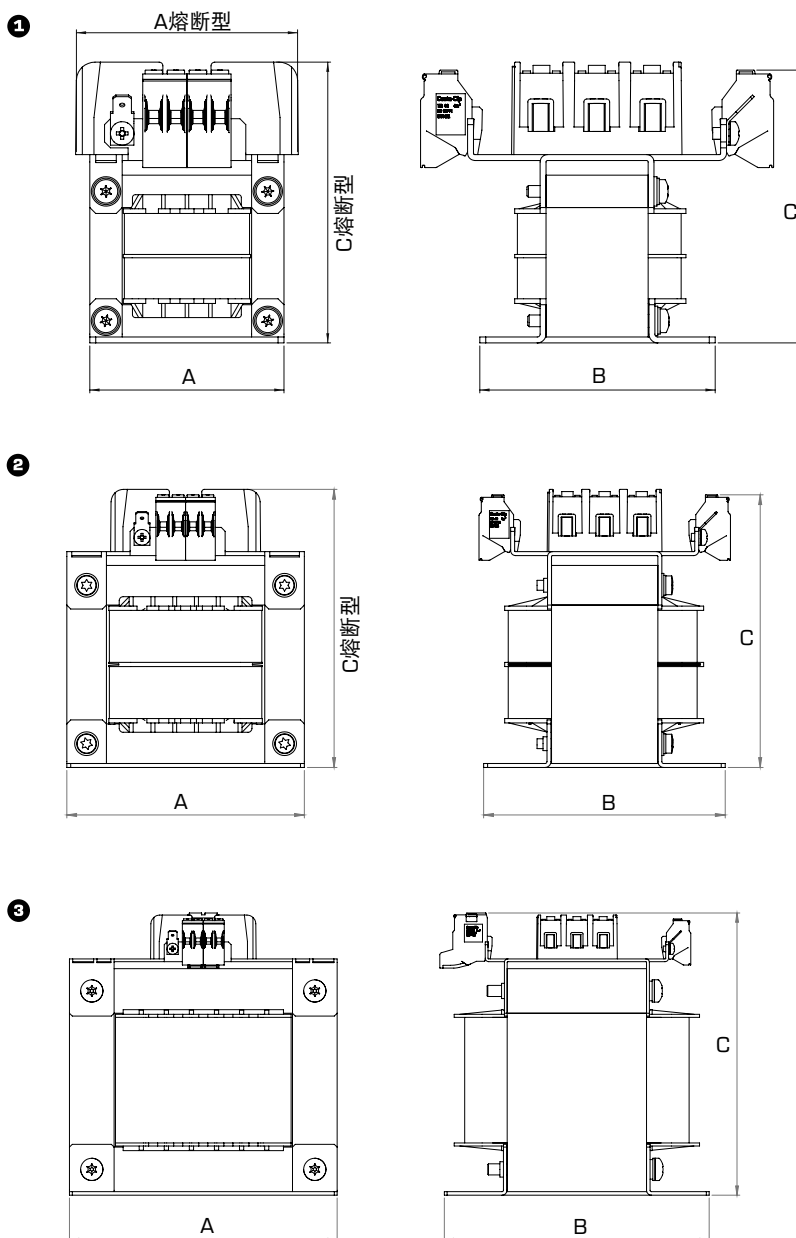
标准版本 (-0)  
Standard version (-0)



美式熔断版本 (-1)  
US-fused version (-1)



带DIN导轨（用于添加其他组件）(-2)  
With DIN rail for additional components (-2)



# 全球化的公司 A GLOBAL COMPANY



总部和生产基地

生产基地

子公司

全球代理

生产代表

工厂1, 德国

**BLOCK**   
block-china.cn



工厂2, 德国



工厂 USA

博力科电气贸易(上海)有限公司  
**BLOCK Electronics Trading (Shanghai) Co., Ltd.**  
Room 224, Building 8, No. 2-42, Lane 433, Yuyuan  
Road, Jing'an District Shanghai, 200040 • P.R. China  
电话 +86 21 62372310 • 传真 +86 21 52300176  
info@block-china.cn • www.block-china.cn